

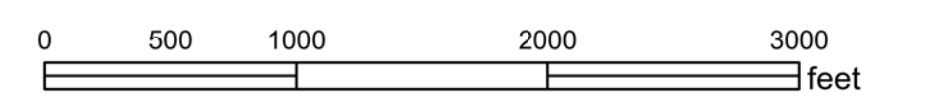
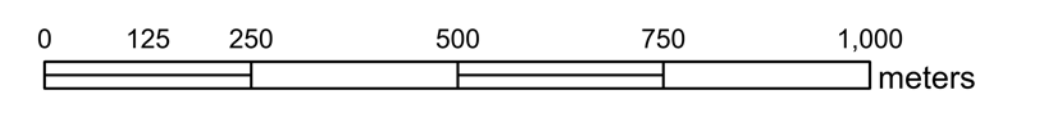
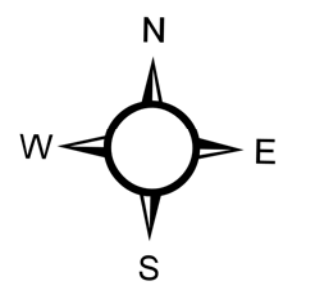
# GROWTH CENTRE

## Cambridge

### FUTURE LAND USE

#### Schedule C2

- C Commercial Designation
- M Industrial Designation
- R Residential Designation
- Growth Centre
- Property Parcel
- Town, Reserve or Federal Land
- Rural Area
- Lake
- River
- Trail



Approved: March 5, 2020

Amended: \_\_\_\_\_

*Lands covered by watercourses/waterbodies shall be subject to the requirements of the Environmental Constraints (O1) Zone.*

*This map is a graphical representation of property boundaries and Municipal boundaries. It is not a survey and is not intended for use with calculating exact dimensions or area.*

*Sources: Nova Scotia Property Records Database and Topographic Database; NS Geomatics Centre; all other data originates with the Municipality of the County of Kings.*



**MUNICIPALITY  
OF THE  
COUNTY OF KINGS**

